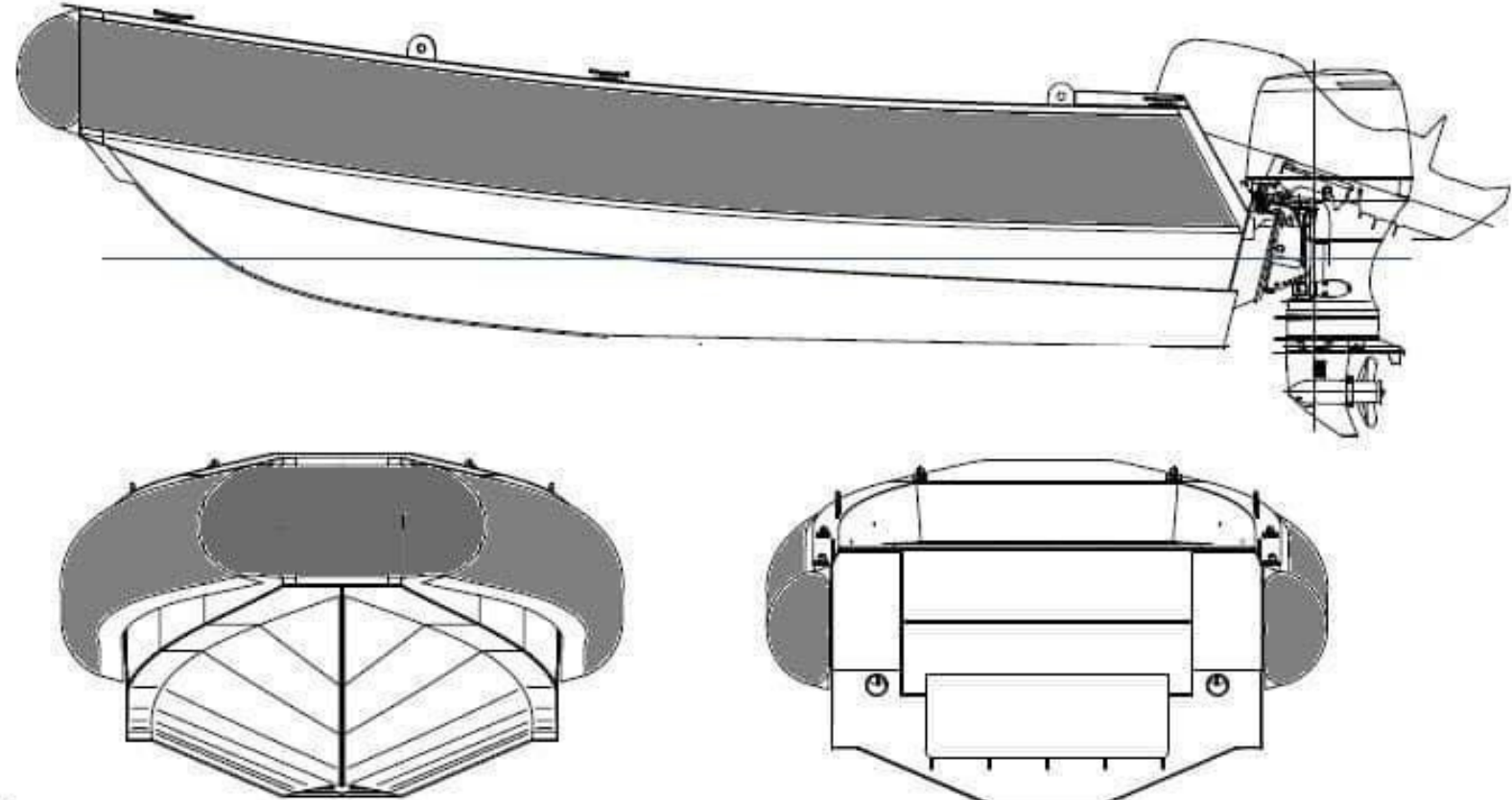


Monodrone 6800

Unmanned Surface Vehicle



Monodrone 6800

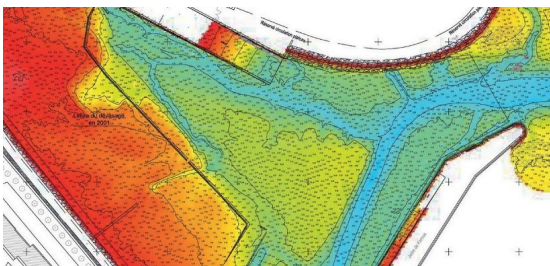


The MONODRONE 6800 is the latest addition to our drone fleet and is designed for offshore conditions.

With a maximum payload of 500kg and a high endurance, this robust vessel is an ideal multi-sensor platform for offshore survey activities.

The vessel is equipped with a moonpool suitable for the installation of various sensors.

The mission planning software enables the operator to efficiently execute a survey fully autonomous.



The MONODRONE 6800 can be used as a force multiplier for an existing survey vessel or can be deployed as a stand-alone vessel for nearshore work.

TECHNICAL SPECIFICATIONS

Dimensions

| | |
|-------------------------------------|--------------------------------|
| Length, width, air draft, draught : | 6.97m, 2.49m, max 2.40m, 0.43m |
| Weight : | 1200kg |
| Payload : | 500kg |
| Moonpool : | 50x50cm |

Performances

| | |
|---------------------|--------------------------------------|
| Vitesse maximale : | 12 knots |
| Vitesse de survey : | 6 knots |
| Moteur : | 2x26.5 Yanmar Diesel engines = 53 kW |
| Carburant : | Diesel (120 liters) |

Power system

| | |
|--------------------------|---------------|
| Payload system voltage : | 12V + 230V AC |
| Max Payload power : | 1,5 kW |

Communications

| | |
|------------------------|---|
| Radio RC : | RF Designe 868MHz, Fr SKY®, Futuba® 2,4 GHz |
| R/C charging time : | 3 heures |
| Wi-Fi : | 5 GHz |
| Autopilot : | Ardupilot + ROS (Mission planner, QGround control, UGS, MAV proxy) |
| Max control distance : | Module mesh DTC : 3000m-5000m RF 868 MHz : 1500m Doodle labs : 3000m |
| Radio : | RF design 968 MHz Wifi 2.4 GHz Wifi (5GHz), Option DTC mesh triband (1,25MHz – 20 MHz) |
| Radio/satellite use : | Radio UHF Autopilot Navigation control Data Acquisition / Data Exchange |

Supervision options

| | |
|--------------------------|--|
| HD Cameras : | 2x Thermal PTZ Camera + Pan & tilt Target |
| Video target detection : | Target detection, identification option (IA) |
| Lidar : | Laser scanning (100m) |
| AIS : | Class B AIS Transponder |

Survey equipment

| | |
|-------------|---|
| Winch : | SVP, SSS towing, Magnetometer towing |
| Multibeam : | Kongsberg®, R2Sonic®, Norbit®, Teledyne®, ... |

Ad-on & sensor options (on demand)

| | |
|----------------|---------------------|
| Single beam : | EA40®, PA500®, ... |
| Lidar : | AML®, Valport®, ... |
| SVP : | |
| Sidescan Sonar | |